

niGlue



Television
Academy



PROUD WINNER OF THE
ENGINEERING, SCIENCE & TECHNOLOGY
EMMY® AWARDS



AI GLUE

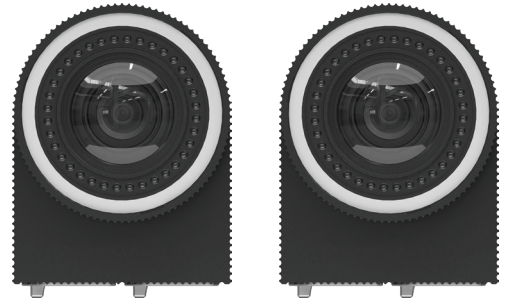
AI Glue is a tracking solution designed to accurately determine a person's position within a space. This advanced system effectively identifies whether an individual is positioned in front of or behind specific graphics, all without the necessity for the individual to carry any active or passive beacons.

The fundamental package includes two high-precision sensors that are capable of covering a tracking area of approximately 4 by 4 meters. This allows talent to freely navigate around augmented reality (AR) elements, using positional zone triggers that conceal or reveal AR graphics based on their location. The system produces a more convincing virtual set and has the capacity to simultaneously track more than one person. With additional sensors, coverage area can be expanded.

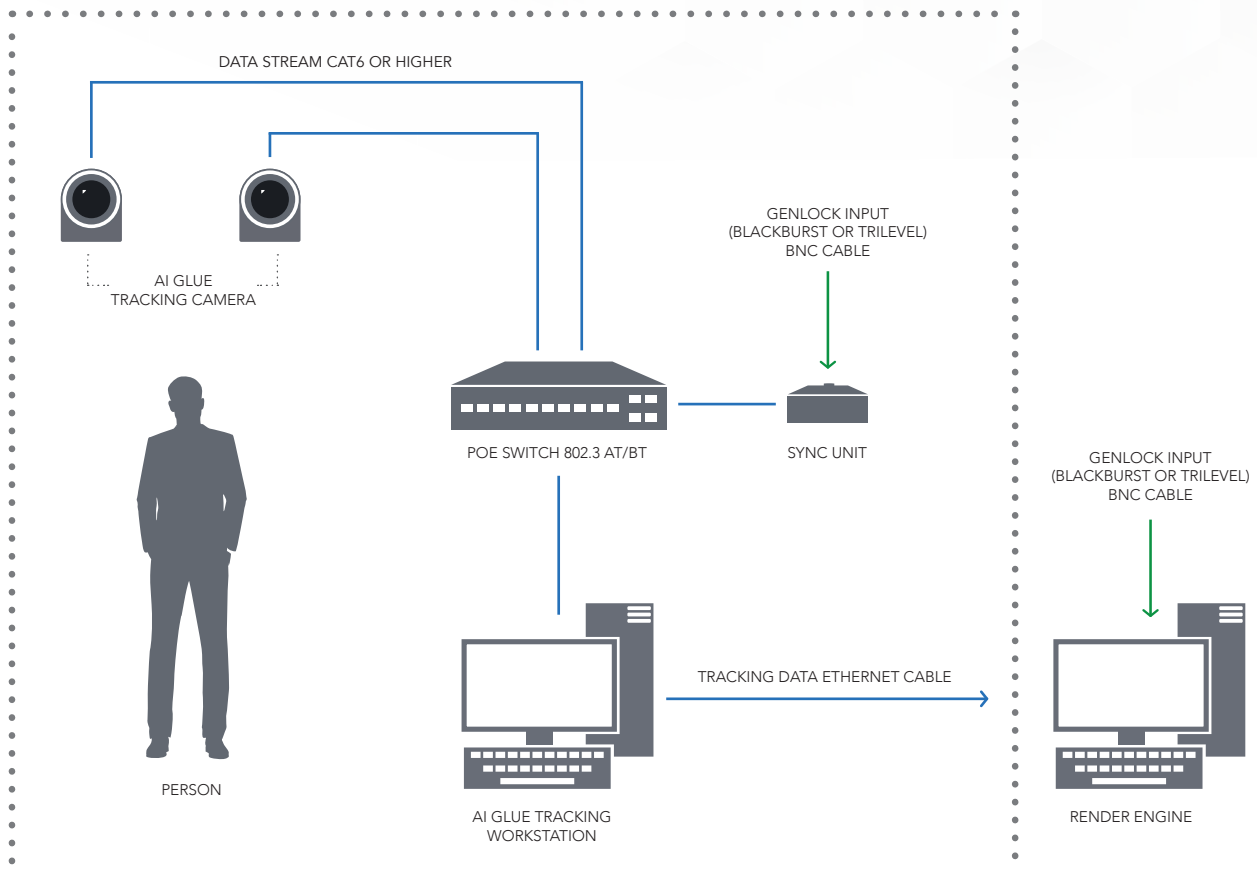
AI Glue is compatible with all other stYpe systems such as RedSpy, Follower, StypeKit, and can work with a fixed-shot camera.

In terms of hardware, the system consists of several key components: multiple cameras, a main unit that processes the data, a synchronization unit that ensures the coordinated operation of all components, and a calibration sample.

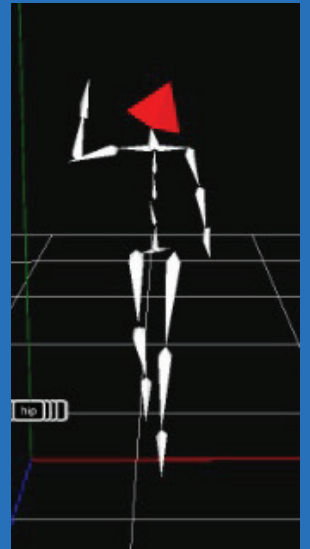
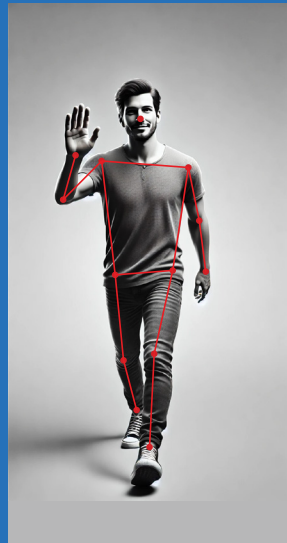
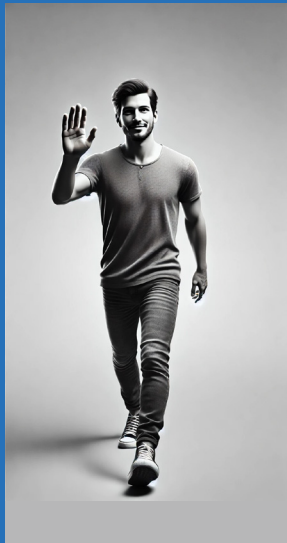
PARTS



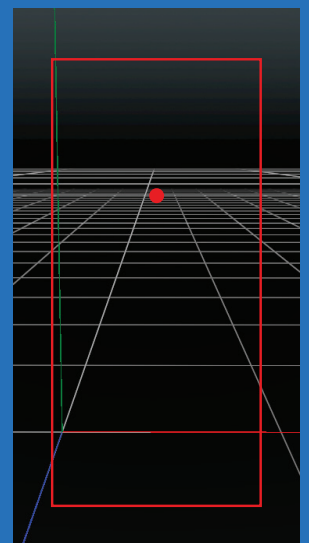
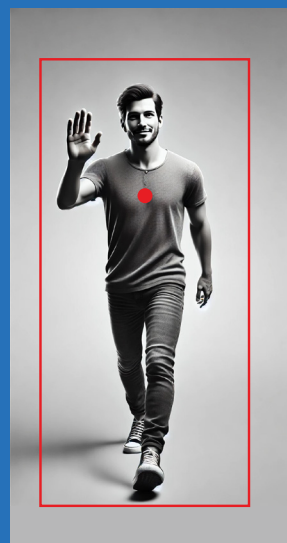
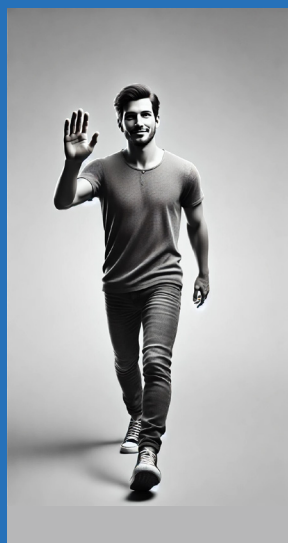
STYPE AI TALENT TRACKING SYSTEM



SKELETON TRACKING



DEPTH TRACKING





Television
Academy



PROUD WINNER OF THE
ENGINEERING, SCIENCE & TECHNOLOGY
EMMY® AWARDS



CONTACT US: www.stype.tv | hi@stype.tv